

# Zuidervaart

AGRI-IMPORT LTD.

## Product guide 2022

5% EARLY  
ORDER  
DISCOUNT  
UNTIL  
MARCH 4TH



Silage Management

Silage Covers

Vapour Barrier

Silage accessories

Twine & Netting

Equipment

# Silage management

## The only way to preserve your silage

Silage is produced when forages are stored in the absence of oxygen. During the anaerobic fermentation process the pH level is decreased, resulting in stable and high quality forage.

The 4 stages of silage management:

1. Cutting
2. Ensiling
3. Covering the silage
4. Feed-out

### 1. Cutting

In the first stage it is important to cut the crop at the right stage, when the appropriate dry matter level and optimal amounts of fiber sources such as ADF and NDF have been reached.

- Spread the swath wide for maximum dry-down effect.
- Make sure that soil particles do not reduce the quality of the silage.

### 2. Ensiling

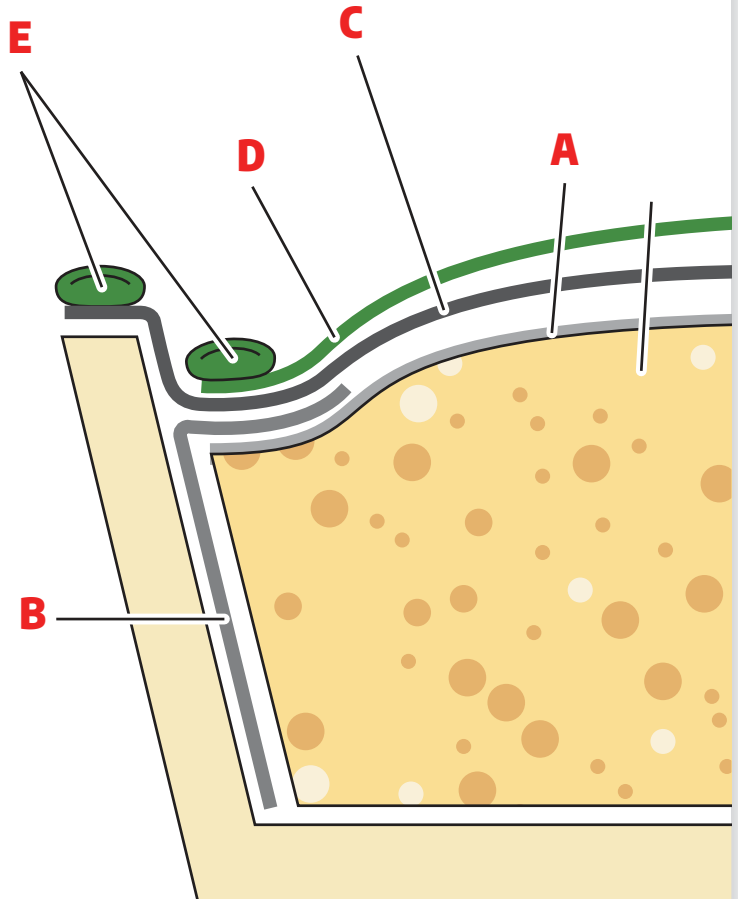
Main points to consider in this stage:

- Inspect the bunker for moulds
- Place the sidewall plastic over the walls
- Feedout speed determines the bunker size:
  - Winter 5 ft/week
  - Summer 7 ft/week
- Never stop packing during ensiling
- Use silage inoculants for extra protection and assurance
- The filled bunker should be a half circle
- Spread silage in thin layers from back to front, in long slopes.

### 3. Covering the silage

Covering and storing the silage can be done in 5 steps:

- A.** MegaBarrier®/TopSeal®
- B.** Sidewall Plastic
- C.** Plastic Sheetting
- D.** Meganyl®
- E.** Peastone bags



# MegaplastPower®

## Silage sheeting

- 5 layer silage sheeting
- Produced with all new virgin materials
- 6 mil. thickness with a strength rating of an 8 mil. plastic
- Highly durable with high puncture and tear resistance

Technical details	Megaplast-Power®	Standard plastic	
		6 mil.	8 mil.
Elongation at break (transverse direction) EN ISO 527-3	> 750%	> 400%	> 450%
Elongation at break (longitudinal direction) EN ISO 527-3	> 600%	> 400%	> 450%
Repture strength (transverse direction) EN ISO 527-3	> 28 Mpa	> 17 Mpa	> 19 Mpa
Repture strength (longitudinal direction) EN ISO 527-3	> 26 Mpa	> 16 Mpa	> 18 Mpa
Dart drop ISO 7765-1	> 850 gr	> 400 gr	> 500 gr

Mpa = Megapascal



# MegaplastPower® black/white 6 mil. (8 mil. Strength)

## Jumbo rolls

Size Ft.	Size M.	Size Ft.	Size M.
20 x 115	6 x 35	20 x 655	6 x 200
20 x 164	6 x 50	23 x 655	7 x 200
23 x 115	7 x 35	26 x 655	8 x 200
23 x 164	7 x 50	26 x 1310	8 x 400
26 x 115	8 x 35	30 x 655	9 x 200
26 x 164	8 x 50	30 x 1310	9 x 400
30 x 115	9 x 35	33 x 655	10 x 200
30 x 164	9 x 50	33 x 1310	10 x 400
33 x 115	10 x 35	36 x 655	11 x 200
33 x 164	10 x 50	36 x 1310	11 x 400
36 x 115	11 x 35	40 x 655	12 x 200
36 x 164	11 x 50	40 x 1310	12 x 400
40 x 115	12 x 35	43 x 655	13 x 200
40 x 164	12 x 50	46 x 655	14 x 200
43 x 164	13 x 50	46 x 1310	14 x 400
46 x 115	14 x 35	50 x 655	15 x 200
46 x 164	14 x 50	53 x 655	16 x 200
50 x 164	15 x 50	53 x 1310	16 x 400
53 x 115	16 x 35	60 x 655	18,3 x 200
53 x 164	16 x 50	60 x 1310	18,3 x 400
53 x 200	16 x 61	66 x 655	20 x 200
60 x 200	18,3 x 61	66 x 1310	20 x 400
66 x 200	20 x 61	79 x 327	24 x 100
79 x 197	24 x 60	92 x 327	28 x 100
92 x 197	28 x 60	105 x 327	32 x 100
105 x 197	32 x 60		

*Jumbo roll unroller frames available*

## VH-Plus

- Highly resistant to punctures and tears
- 6 mil. black/white sheeting
- 5 layer very durable plastic
- Cost effective with optimal performance

### VH-Plus black/white 6 mil.

Size Ft.	Size M.
26 x 164	8 x 50
30 x 164	9 x 50
33 x 164	10 x 50
36 x 164	11 x 50
40 x 164	12 x 50
46 x 164	14 x 50
53 x 164	16 x 50
60 x 164	18 x 50
72 x 200	22 x 61
30 x 984	9 x 300
33 x 984	10 x 300
36 x 984	11 x 300
40 x 984	12 x 300
46 x 984	14 x 300
53 x 984	16 x 300
60 x 984	18 x 300
72 x 984	22 x 300



## MegaCombi

### Double covering

- Combination of MegaplastPower® and MegaBarrier® conveniently rolled together on one roll
- Stable seal with a very high oxygen barrier
- Faster, easier and safer covering of the silage bunker
- Unroll them together at the same time
- Eliminates chance of puncturing O2 barrier



Technical details		Megaplast Power®	MegaBarrier®	
Tensile strength at break	MD	30	36	(MPa)
	TD	30	35	
Elongation at break	MD	750	500	(%)
	TD	600	550	
Dart drop		> 850	300	(gr)
Oxygen permeability		< 25		cm <sup>3</sup> /m <sup>2</sup> /day

## MegaCombi

Size Ft.	Size M.
33 x 164	10 x 50
40 x 164	12 x 50
46 x 164	14 x 50
53 x 164	16 x 50
60 x 200	18,3 x 61
66 x 200	20 x 61
33 x 984	10 x 300
40 x 984	12 x 300
46 x 984	14 x 300
53 x 984	16 x 300
60 x 984	18,3 x 300
66 x 984	20 x 300



## Megaleen® Silage sheeting

- 6 mil. black/black sheeting
- 3 layer film, very durable
- Cost effective

### Plastic 6 mil. Megaleen®

Size Ft.	Size M.
20 x 164	6 x 50
26 x 164	8 x 50
30 x 164	9 x 50
33 x 164	10 x 50
36 x 164	11 x 50
40 x 164	12 x 50
46 x 164	14 x 50
53 x 164	16 x 50
33 x 655	10 x 200
40 x 655	12 x 200
46 x 655	14 x 200
53 x 655	16 x 200
33 x 1310	10 x 400
40 x 1310	12 x 400
46 x 1310	14 x 400
53 x 1310	16 x 400





## Sidewall Plastic

- Placed along the bunker wall and over the TopSeal/MegaBarrier®
- Keeps rain and melted snow out
- Protects the concrete wall from acid influences
- Improves feed quality along wall

### Sidewall Film 4 mil. Clear

Size Ft.	Size M.
----------	---------

13 x 164	4 x 50
----------	--------

20 x 164	6 x 50
----------	--------

### Sidewall Film 5 mil. Black

Size Ft.	Size M.
----------	---------

13 x 164	4 x 50
----------	--------

13 x 492	4 x 150
----------	---------

16 x 164	5 x 50
----------	--------

20 x 164	6 x 50
----------	--------

NEW

## Meganyl®

### Protection covers

Mesh nets for protection against damage from:

- Birds
- Rodents
- Raccoons
- Deer

Size Ft.	Size M.
----------	---------

13 x 50	4 x 15
---------	--------

20 x 33	6 x 10
---------	--------

20 x 50	6 x 15
---------	--------

26 x 33	8 x 10
---------	--------

26 x 50	8 x 15
---------	--------

33 x 40	10 x 12
---------	---------

40 x 50	12 x 15
---------	---------

NEW



## MegaBarrier®

- 2 mil. oxygen barrier placed directly on silage
- 50 times less oxygen permeability than standard barriers
- Ensures faster fermentation
- Reduces dry matter loss in the top 3 ft. of silage
- Surface spoilage is virtually eliminated
- Clings to the silage

Property		MegaBarrier®	TopSeal	
Dart drop		300	120	g
Tensile at break	MD	36	22	Mpa
	TD	35	23	Mpa
Elongation at break	MD	500	350	%
	TD	550	370	%
OTR - Oxygen Transmission Rate		< 25	> 4000	cm <sup>3</sup> /m <sup>2</sup> /day

### MegaBarrier® 2.0 mil.

Mpa = Megapascal

Size Ft.	Size M.
20 x 164	6 x 50
26 x 164	8 x 50
33 x 164	10 x 50
40 x 164	12 x 50
46 x 164	14 x 50
53 x 164	16 x 50
60 x 200	18 x 61
66 x 200	20 x 61
26 x 655	8 x 200
33 x 655	10 x 200
40 x 655	12 x 200
46 x 655	14 x 200
53 x 655	16 x 200
60 x 655	18 x 200
66 x 655	20 x 200
60 x 1310	18 x 400
66 x 1310	20 x 400



## TopSeal®

### First cover seal

- Placed directly on the silage
- Follows the shape of the silage
- Reduces the amount of spoilage in the top layer of feed
- Reduces heating and mould growth
- Keeps silage cool during feed-out
- Clings to the silage

### TopSeal® 1.6 mil.

Size Ft.	Size M.
26 x 164	8 x 50
33 x 164	10 x 50
40 x 164	12 x 50
46 x 164	14 x 50
53 x 164	16 x 50
60 x 200	18 x 61
26 x 655	8 x 200
33 x 655	10 x 200
40 x 655	12 x 200
46 x 655	14 x 200
53 x 655	16 x 200
60 x 655	18 x 200
66 x 655	20 x 200



Vapour Barrier



## Sidewall tires

- Covers 9 square feet
- Easy to handle
- Weight 23-27 Lbs
- 30 sidewalls per bundle

## Sandbags/Anchorbags

- Available empty or filled
- Filled bags are sewed shut
- Place along edge of wall to hold plastic firmly in place

## Silage equipment

### Products

EasyLock30®, a special strap for Bunker- & Pitsilo's

Sandbags (Tubes)  
120x27cm heavy duty, 2 handles

Sandbags (Tubes) filled with peastone 120x27cm heavy duty

Anchorbags filled with peastone 3 Ft. long

Pick up price per 50 on a skid

Repair tape (white)

Sidewall tires

## Vito twine

### For large square bales

Under the Vito brand we offer different varieties of twine which are used for baling hay, straw and grass. The twine is made from polypropylene which gives it a increased pulling strength, consistent quality and better durability.

- Uniform ball shape to ensure trouble free running in baler
- Excellent knot performance

	Length/ Bale	Colour	Knot strength
VITO-UNI	5300 ft.	Cherry	440 lbs.
VITO-130	4000 ft.	Blue/Yellow	550 lbs.
Cotesi One	4300 ft.	Green	650 lbs.



## VH Net®

### High quality net-wrap

In numerous trial runs VH Net®, has proven itself and can guarantee a minimal pulling strength of 260 kg.

- UV protection
- Reliable and consistent
- Left/right indication
- Guaranteed length
- Roll carry handles
- 16 rolls per pallet

Type net	Dia- meter of roll	Length of roll	Bales/roll 2 wraps	Bales/ roll 2,5 wraps	Bales/roll 3 wraps
VH Net 48" 2600	26 cm/ 10,2 in	2600 m/ 8530 ft	210	167	140
VH Net 48" 3600	29 cm/ 11,4 in	3600 m/ 11810 ft	288	230	192
VH Net 51" 3000	27 cm/ 10,6 in	3000 m/ 9850 ft	240	190	160



# Stretch Wrap

## For round and square bales

Excellent adhesive strenght. High tack level and and long life ensures trouble free wrapping.

### MegaStretch®

- Used for round and square bales
- Dowlex product
- Consists of 7 layers

### MegaStretch® Extreme

- Contractor packaging (no boxes)
- More bales per roll
- Lower costs per bale
- Less frequent replacement
- Higher capacity per hour
- Consists of 7 layers



Product	Size	Colour	Rolls/Pallet
MegaStretch®	75 cm x 1500 m 30 in x 4900 ft	White/ Green	20
MegaStretch® Extreme	75 cm x 1800 m 30 in x 5900 ft	White/ Green	20

### Baling

Number of wrapped bales / 1 roll of MegaStretch:

	length in m	Round bale	Round bale	Square bale
		4 ft	4 ft	3ft x 4ft x 5ft
		4 layers	6 layers	6 layers
Megastretch 75cm / 30 inch	1500	28	20	18
Megastretch Extreme 75cm / 30 inch	1800	33	24	21



# MAX PACK

## Silage compaction roller

- The MAX PACK has been specially designed to increase forage compaction to pack silage tighter, increasing storage capacity and silage quality
- Adjust the weight of MAX PACK by filling the drum with water
- Provides a raking action to help level the silage
- The 4 in. high fins help press in silage tight, while solid drum packs
- Side shift models available
  - Pack better along walls
  - Hydraulically shift the MAX PACK 3 ft left or right for better safety in drive over piles and when silage is high above bunker walls
- Bump wheels standard on outside of frame to prevent damage to walls and machine



Model	Side Shift	Width	Empty weight	Filled weight
MP 250 SS	YES	8 ft	3600 lbs	6750 lbs
MP 300 SS	YES	10 ft	4250 lbs	8250 lbs
MP 350 SS	YES	11.5 ft	4625 lbs	9250 lbs
MP 300	NO	10 ft	4250 lbs	8250 lbs
MP 350	NO	11.5 ft	4400 lbs	9025 lbs
MP 400	NO	13 ft	4750 lbs	10000 lbs

*Extra Weights 56 lbs each*





# Tire Shooter

## Reduce time & labor

### Advantages

- Self unloading
- Skidsteer and telehandler model - 16" length
- Wheel loader - 23" length
- Custom fit to any skid or wheel loader
- Easier to load
- Haul up to 110 sidewalls
- Can be used with full tires
- Professionally designed, welded and painted



## Calf taxi

- Fully galvanized frame
- Plastic slatted bottom (less loss of straw)
- Adjustable opening for the head
- Door can be opened on both sides
- Available with pail holders and bottle holders

### Benefits

- Calf can dry up in the calf taxi after birth
- Calf is not on cold and moist surfaces
- Easy to move , pick up with pallet forks
- Fully demountable
- Easy to clean





# Zuidervaart Agri-Import Ltd.



For over 20 years, Zuidervaart Agri-Import has been providing farmers with the highest quality silage covers and accessories. With an extensive product offering we have the solutions to help you achieve excellent silage management. We strive to provide quality customer service with quick delivery.

Visit our website [www.zuidervaartagri.com](http://www.zuidervaartagri.com) to find a dealer near you.

**Zuidervaart**  
AGRI-IMPORT LTD.

Box 306 Mitchell, ON, 5259 Hwy 8, NOK 1N0

Phone: 1-519 393 8290 - Fax: 1-519 393 8293

E-mail: [info@zuidagri.com](mailto:info@zuidagri.com) - Web: [www.zuidervaartagri.com](http://www.zuidervaartagri.com)

With the best  
view on silage

Ton Zuidervaart: Cell 1-519-276-7445  
Andrew Roosendaal: Cell 1-519-272-3409