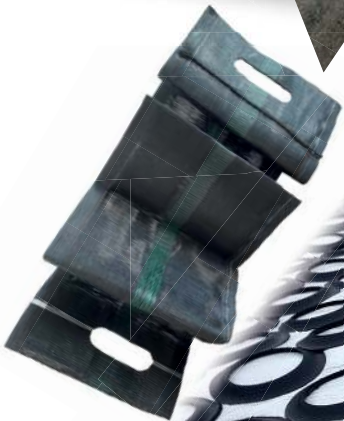


Zuidervaart

AGRI-IMPORT LTD.

Product guide

2021



Silage Management

Silage Covers

Vapour Barrier

Silage accessories

Baling & Netting

Equipment

Silage Management

The only way to preserve your silage

Silage is produced when forages are stored in the absence of oxygen. During the anaerobic fermentation process the pH level is decreased, resulting in stable and high quality forage.

The 4 stages of silage management;

1. Cutting
2. Ensiling
3. Covering the silage
4. Feed-out

1. Cutting

In the first stage it is important to cut the crop at the right stage, when the appropriate dry matter level and optimal amounts of fiber sources such as ADF and NDF have been reached.

- ▲ Spread the swath wide for maximum dry-down effect.
- ▲ Make sure that soil particles do not reduce the quality of the silage.



2. Ensiling

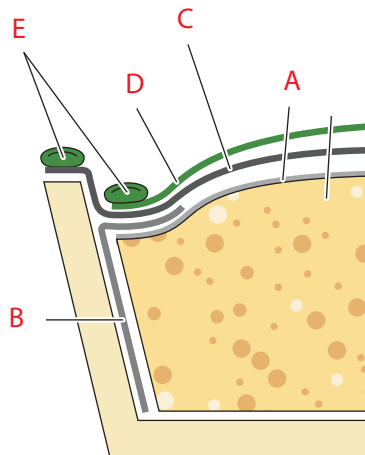
Main points to consider in this stage:

- ▲ Inspect the bunker for moulds.
- ▲ Place the sidewall plastic over the walls.
- ▲ Feedout speed determines the bunker size:
 - ▲ Winter 5 ft/week
 - ▲ Summer 7 ft/week.
- ▲ Never stop packing during ensiling.
- ▲ Use silage inoculants for extra protection and assurance.
- ▲ The filled bunker should be a half circle.
- ▲ Spread silage in thin layers from back to front, in long slopes.

3. Covering the silage

Covering and storing the silage can be done in 5 steps

- A. MegaBarrier® / TopSeal
- B. Sidewall Plastic
- C. Plastic Sheeting
- D. Meganyl®
- E. Sandbags / Anchorbags



MegaplastPower®

- ▲ 5 layer silage sheeting.
- ▲ Produced with all new virgin materials.
- ▲ 6 mil. thickness with a strength rating of an 8 mil. plastic.
- ▲ Highly durable with high puncture and tear resistance.

| Technical details | Megaplast- Power® | Standard plastic | |
|---|----------------------|------------------|----------|
| | | 6 mil. | 8 mil. |
| Elongation at break (transverse direction) EN ISO 527-3 | > 750% | > 400% | > 450% |
| Elongation at break (longitudinal direction) EN ISO 527-3 | > 600% | > 400% | > 450% |
| Repture strength (transverse direction) EN ISO 527-3 | > 28 Mpa | > 17 Mpa | > 19 Mpa |
| Repture strength (longitudinal direction) EN ISO 527-3 | > 26 Mpa | > 16 Mpa | > 18 Mpa |
| Dart drop ISO 7765-1 | > 850 gr | > 400 gr | > 500 gr |

Mpa = Megapascal



MegaplastPower® black/white 6 mil. (8 mil. Strength)

| Size Ft. | Size M. |
|-----------|-----------|
| 20 x 115 | 6 x 35 |
| 20 x 164 | 6 x 50 |
| 23 x 115 | 7 x 35 |
| 23 x 164 | 7 x 50 |
| 26 x 115 | 8 x 35 |
| 26 x 164 | 8 x 50 |
| 30 x 115 | 9 x 35 |
| 30 x 164 | 9 x 50 |
| 33 x 115 | 10 x 35 |
| 33 x 164 | 10 x 50 |
| 36 x 115 | 11 x 35 |
| 36 x 164 | 11 x 50 |
| 40 x 115 | 12 x 35 |
| 40 x 164 | 12 x 50 |
| 43 x 164 | 13 x 50 |
| 46 x 115 | 14 x 35 |
| 46 x 164 | 14 x 50 |
| 50 x 164 | 15 x 50 |
| 53 x 115 | 16 x 35 |
| 53 x 164 | 16 x 50 |
| 53 x 200 | 16 x 61 |
| 60 x 200 | 18,3 x 61 |
| 66 x 200 | 20 x 61 |
| 72 x 197 | 22 x 60 |
| 79 x 197 | 24 x 60 |
| 92 x 197 | 28 x 60 |
| 105 x 197 | 32 x 60 |

NEW

NEW

Jumbo rolls

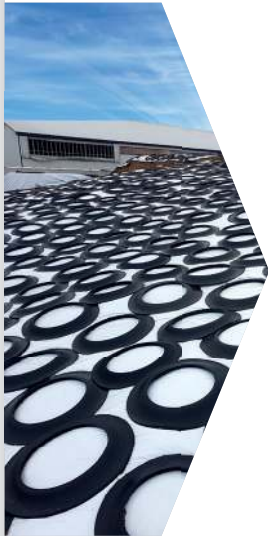
| Size Ft. | Size M. |
|-----------|------------|
| 20 x 655 | 6 x 200 |
| 23 x 655 | 7 x 200 |
| 26 x 655 | 8 x 200 |
| 26 x 1310 | 8 x 400 |
| 30 x 655 | 9 x 200 |
| 30 x 1310 | 9 x 400 |
| 33 x 655 | 10 x 200 |
| 33 x 1310 | 10 x 400 |
| 36 x 655 | 11 x 200 |
| 36 x 1310 | 11 x 400 |
| 40 x 655 | 12 x 200 |
| 40 x 1310 | 12 x 400 |
| 43 x 655 | 13 x 200 |
| 46 x 655 | 14 x 200 |
| 46 x 1310 | 14 x 400 |
| 50 x 655 | 15 x 200 |
| 53 x 655 | 16 x 200 |
| 53 x 1310 | 16 x 400 |
| 60 x 655 | 18,3 x 200 |
| 60 x 1310 | 18,3 x 400 |
| 66 x 655 | 20 x 200 |
| 66 x 1310 | 20 x 400 |
| 72 x 327 | 22 x 100 |
| 79 x 327 | 24 x 100 |
| 92 x 327 | 28 x 100 |
| 105 x 327 | 32 x 100 |

NEW

NEW

We also supply Special "Easy-unrollers"





VH-Plus

- ▲ Highly resistant to punctures and tears.
- ▲ 6 mil. black/white sheeting.
- ▲ 5 layer very durable plastic.
- ▲ Cost effective with optimal performance.

Plastic 6 mil. VH-Plus

| Size Ft. | Size M. |
|----------|----------|
| 26 x 164 | 8 x 50 |
| 30 x 164 | 9 x 50 |
| 33 x 164 | 10 x 50 |
| 36 x 164 | 11 x 50 |
| 40 x 164 | 12 x 50 |
| 46 x 164 | 14 x 50 |
| 53 x 164 | 16 x 50 |
| 60 x 164 | 18 x 50 |
| 30 x 984 | 9 x 300 |
| 33 x 984 | 10 x 300 |
| 36 x 984 | 11 x 300 |
| 40 x 984 | 12 x 300 |
| 46 x 984 | 14 x 300 |
| 53 x 984 | 16 x 300 |
| 60 x 984 | 18 x 300 |



MegaCombi: Double covering

- ▲ Combination of MegaplastPower® and MegaBarrier® rolled together.
- ▲ Stable seal with a very high oxygen barrier.
- ▲ Faster, easier and safer covering of the silage bunker.
- ▲ Unroll them together at the same time.
- ▲ Eliminates chance of puncturing O2 barrier.

Technical details

| | | Mega-plast Power® | Mega-Barrier® | |
|---------------------------|----|-------------------|---------------|------------|
| Tensile strength at break | MD | 30 | 36 | (MPa) |
| | TD | 30 | 35 | |
| Elongation at break | MD | 750 | 500 | (%) |
| | TD | 600 | 550 | |
| Dart drop | | > 850 | 300 | (gr) |
| Oxygen permeability | | < 25 | | cm³/m²/day |

MegaCombi

| Size Ft. | Size M. |
|----------|---------|
|----------|---------|

| | |
|----------|---------|
| 33 x 164 | 10 x 50 |
|----------|---------|

| | |
|----------|---------|
| 40 x 164 | 12 x 50 |
|----------|---------|

| | |
|----------|---------|
| 46 x 164 | 14 x 50 |
|----------|---------|

| | |
|----------|---------|
| 53 x 164 | 16 x 50 |
|----------|---------|

| | |
|----------|-----------|
| 60 x 200 | 18,3 x 61 |
|----------|-----------|

| | |
|----------|---------|
| 66 x 200 | 20 x 61 |
|----------|---------|

| | |
|----------|----------|
| 33 x 984 | 10 x 300 |
|----------|----------|

| | |
|----------|----------|
| 40 x 984 | 12 x 300 |
|----------|----------|

| | |
|----------|----------|
| 46 x 984 | 14 x 300 |
|----------|----------|

| | |
|----------|----------|
| 53 x 984 | 16 x 300 |
|----------|----------|

| | |
|----------|------------|
| 60 x 984 | 18,3 x 300 |
|----------|------------|

| | |
|----------|----------|
| 66 x 984 | 20 x 300 |
|----------|----------|





Megaleen®

- ▲ 6 mil. black/black sheeting.
- ▲ 3 layer film, very durable.
- ▲ Cost effective.

Plastic 6 mil. Megaleen®

| Size Ft. | Size M. |
|-----------|----------|
| 20 x 164 | 6 x 50 |
| 26 x 164 | 8 x 50 |
| 30 x 164 | 9 x 50 |
| 33 x 164 | 10 x 50 |
| 36 x 164 | 11 x 50 |
| 40 x 164 | 12 x 50 |
| 46 x 164 | 14 x 50 |
| 53 x 164 | 16 x 50 |
| 33 x 655 | 10 x 200 |
| 40 x 655 | 12 x 200 |
| 46 x 655 | 14 x 200 |
| 53 x 655 | 16 x 200 |
| 33 x 1310 | 10 x 400 |
| 40 x 1310 | 12 x 400 |
| 46 x 1310 | 14 x 400 |
| 53 x 1310 | 16 x 400 |



Sidewall Plastic

- ▲ Placed along the bunker wall and over the TopSeal/MegaBarrier®.
- ▲ Keeps rain and melted snow out.
- ▲ Protects the concrete wall from acid influences.
- ▲ Improves feed quality along wall.

Sidewall Film 4 mil. Clear

| Size Ft. | Size M. |
|----------|---------|
| 13 x 164 | 4 x 50 |
| 20 x 164 | 6 x 50 |

Sidewall Film 5 mil. Black

| Size Ft. | Size M. |
|----------|---------|
| 13 x 164 | 4 x 50 |
| 13 x 492 | 4 x 150 |
| 20 x 164 | 6 x 50 |

Meganyl®

Mesh nets for protection against damage from:

- ▲ birds
- ▲ rodents
- ▲ raccoons
- ▲ deer

Meganyl Protection Covers

| Size Ft. | Size M. |
|----------|---------|
| 13 x 50 | 4 x 15 |
| 20 x 33 | 6 x 10 |
| 26 x 33 | 8 x 10 |
| 26 x 50 | 8 x 15 |
| 33 x 40 | 10 x 12 |
| 40 x 50 | 12 x 15 |





MegaBarrier®

- ▲ 2 mil. oxygen barrier placed directly on silage.
- ▲ 50 times less oxygen permeability than standard barriers.
- ▲ Ensures faster fermentation.
- ▲ Reduces dry matter loss in the top 3 ft. of silage.
- ▲ Surface spoilage is virtually eliminated
- ▲ Clings to the silage.

| Property | | Mega-Barrier® | TopSeal | |
|---------------------|----|---------------|---------|-----|
| Dart drop | | 300 | 120 | g |
| Tensile at break | MD | 36 | 22 | Mpa |
| | TD | 35 | 23 | Mpa |
| Elongation at break | MD | 500 | 350 | % |
| | TD | 550 | 370 | % |

OTR - Oxygen Transmission Rate < 25 > 4000 cm³/m²/day

Mpa = Megapascal

MegaBarrier®

| Size Ft. | Size M. |
|-----------|----------|
| 20 x 164 | 6 x 50 |
| 26 x 164 | 8 x 50 |
| 33 x 164 | 10 x 50 |
| 40 x 164 | 12 x 50 |
| 46 x 164 | 14 x 50 |
| 53 x 164 | 16 x 50 |
| 60 x 200 | 18 x 61 |
| 66 x 200 | 20 x 61 |
| 26 x 655 | 8 x 200 |
| 33 x 655 | 10 x 200 |
| 40 x 655 | 12 x 200 |
| 46 x 655 | 14 x 200 |
| 53 x 655 | 16 x 200 |
| 60 x 655 | 18 x 200 |
| 66 x 655 | 20 x 200 |
| 60 x 1310 | 18 x 400 |
| 66 x 1310 | 20 x 400 |



TopSeal®

- ▲ Placed directly on the silage.
- ▲ Follows the shape of the silage.
- ▲ Reduces the amount of spoilage in the top layer of feed.
- ▲ Reduces heating and mould growth.
- ▲ Keeps silage cool during feed-out.
- ▲ Clings to the silage.

TopSeal® 1.6 mil.

| Size Ft. | Size M. |
|----------|----------|
| 26 x 164 | 8 x 50 |
| 33 x 164 | 10 x 50 |
| 40 x 164 | 12 x 50 |
| 46 x 164 | 14 x 50 |
| 53 x 164 | 16 x 50 |
| 60 x 200 | 18 x 61 |
| 26 x 655 | 8 x 200 |
| 33 x 655 | 10 x 200 |
| 40 x 655 | 12 x 200 |
| 46 x 655 | 14 x 200 |
| 53 x 655 | 16 x 200 |
| 60 x 655 | 18 x 200 |



Vapour Barrier



Sidewall tires

- ▲ Covers 9 square feet.
- ▲ Easy to handle.
- ▲ Weight 23-27 Lbs.
- ▲ 30 sidewalls per bundle.

Easylock®

EasyLock® The easy way to hold down plastic

- ▲ Holds the plastic tight against the silage.
- ▲ Very strong and easy to use.
- ▲ Can be set in place quickly.
- ▲ Very effective in high wind.
- ▲ Can be delivered in any length.
- ▲ Use EasyLock® in combination with MegaBarrier® for best results.
- ▲ Can be tightened as silage settles.

The silage clamp

The solution for easy ensiling

Advantages:

- ▲ Long life with resilient stainless steel material.
- ▲ Suitable for walls with a thickness of 6-10 inches.
- ▲ Holds plastic firmly in place against the wall.
- ▲ Prevents sidewall film from blowing away.
- ▲ Thin and smooth, making it easier to pull out when the bunker is filled.
- ▲ Useful during feedout to hold plastic in place.

Available in 5, 8 and 10 inch widths for various wall thickness, placed 7-10 feet apart.

Sandbags / Anchorbags

- ▲ Available empty or filled.
- ▲ Filled bags are sewed shut.
- ▲ Place along edge of wall to hold plastic firmly in place.

Silage equipment

Products

Silage Clamp 5 inch

Silage Clamp 8 inch

Silage Clamp 10 inch

EasyLock30®, a special strap for Bunker- & Pitsilo's

Sandbags (Tubes)
120x27cm heavy duty, 2 handles

Sandbags (Tubes) filled with peastone 120x27cm heavy duty

Anchorbags filled with peastone 3 Ft. long

Pick up price per 50 on a skid

Repair tape (white)

Sidewall tires starting at





Vito twine for large square bales

Under the Vito brand we offer different varieties of twine which are used for baling hay, straw and grass. The twine is made from polypropylene which gives it a increased pulling strength, consistent quality and better durability.

- ▲ Uniform ball shape to ensure trouble free running in baler.
- ▲ Excellent knot performance.

| | Length/ Bale | Colour | Knot strength |
|---------------|-----------------|-----------------|------------------|
| VITO-UNI | 5300 ft. | Cherry | 440 lbs. |
| VITO-130 | 3700 ft. | Red | 440 lbs. |
| VITO-130 | 4000 ft. | Blue/ Yellow | 550 lbs. |
| Cotesi One | 4300 ft. | Green | 650 lbs. |





VH Net®

VH Net® is a high quality net-wrap. In numerous trial runs VH Net®, has proven itself and can guarantee a minimal pulling strength of 260 kg.

- ▲ UV protection.
- ▲ Reliable and consistent.
- ▲ Left/right indication.
- ▲ Guaranteed length.
- ▲ Roll carry handles.
- ▲ 16 rolls per pallet.

| Type net | Dia- meter of roll | Length of roll | Bales/ roll 2 wraps | Bales/ roll 2,5 wraps | Bales/ roll 3 wraps |
|--------------------|--------------------------|---------------------|---------------------------|-----------------------------|---------------------------|
| VH Net 48" 2600 | 26 cm/ 10,2 in | 2600 m/ 8530 ft | 210 | 167 | 140 |
| VH Net 48" 3600 | 29 cm/ 11,4 in | 3600 m/ 11810 ft | 288 | 230 | 192 |
| VH Net 51" 3000 | 27 cm/ 10,6 in | 3000 m/ 9850 ft | 240 | 190 | 160 |



Baling & Netting



Stretch Wrap

MegaStretch®

- ▲ Used for round and square bales.
- ▲ Dowlex product.
- ▲ Consists of 7 layers.

MegaStretch® Extreme

- ▲ Contractor packaging (no boxes).
- ▲ More bales per roll.
- ▲ Lower costs per bale.
- ▲ Less frequent replacement.
- ▲ Higher capacity per hour.

| Product | Size | Colour | Rolls/ Pallet |
|-------------------------|-----------------------------------|-----------------|------------------|
| MegaStretch® | 75 cm x 1500 m 30 in x 4900 ft | White | 20 |
| MegaStretch® Extreme | 75 cm x 1800 m 30 in x 5900 ft | White/ Green | 20 |

Baling

Number of wrapped bales / 1 roll of MegaStretch:

| | length in m | Round bale | Round bale | Square bale |
|--|----------------|---------------|---------------|--------------------|
| | | 4 ft | 4 ft | 3ft x 4ft x 5ft |
| | | 4 layers | 6 layers | 6 layers |
| MegaStretch 75cm / 30 inch | 1500 | 28 | 20 | 18 |
| MegaStretch Extreme 75cm / 30 inch | 1800 | 33 | 24 | 21 |

Calf taxi

- ▲ Fully galvanized frame.
- ▲ Plastic slatted bottom (less loss of straw).
- ▲ Adjustable opening for the head.
- ▲ Door can be opened on both sides.
- ▲ Available with pail holders and bottle holders.

| | Length | Width |
|----|--------|-------|
| XL | 130cm | 90cm |

1, 2, 3 or 4 box configurations.

Benefits

- ▲ Calf can dry up in the calf taxi after birth.
- ▲ Calf is not on cold and moist surfaces.
- ▲ Easy to move , pick up with pallet forks.
- ▲ Fully demountable.
- ▲ Easy to clean.





MAX PACK

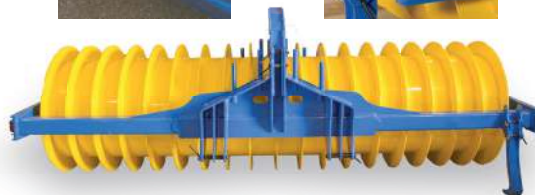
Silage compaction roller



- ▲ The MAX PACK has been specially designed to increase forage compaction to pack silage tighter, increasing storage capacity and silage quality
- ▲ Adjust the weight of MAX PACK by filling the drum with water
- ▲ Provides a raking action to help level the silage
- ▲ The 4 in. high fins help press in silage tight, while solid drum packs
- ▲ Side shift models available
 - Pack better along walls
 - Hydraulically shift the MAX PACK 3 ft left or right for better safety in drive over piles and when silage is high above bunker walls
- ▲ Bump wheels standard on outside of frame to prevent damage to walls and machine

| Model | Side Shift | Width | Empty weight | Filled weight |
|-----------|------------|---------|--------------|---------------|
| MP 250 SS | YES | 8 ft | 3600 lbs | 6750 lbs |
| MP 300 SS | YES | 10 ft | 4250 lbs | 8250 lbs |
| MP 300 | NO | 10 ft | 4250 lbs | 8250 lbs |
| MP 350 SS | YES | 11.5 ft | 4625 lbs | 9250 lbs |
| MP 350 | NO | 11.5 ft | 4400 lbs | 9025 lbs |
| MP 400 | NO | 13 ft | 4750 lbs | 10000 lbs |

Extra Weights 56 lbs each



Tire Shooter

Reduce time & labor while covering piles & bunkers

Advantages

- ▲ Self unloading
- ▲ Skidsteer and telehandler model - 16" length
- ▲ Wheel loader - 23" length
- ▲ Custom fit to any skid or wheel loader
- ▲ Easier to load
- ▲ Haul up to 110 sidewalls
- ▲ Can be used with full tires
- ▲ Professionally designed, welded and painted



Zuidervaart Agri-Import Ltd.

With the best view on silage



Our company began in 2002 to fill a growing need for quality bunker silo plastic. We have quickly become a leader in this field, providing supplies for all aspects of bunker silo covering.

We pride ourselves on excellent customer service and offer free delivery in Southwestern Ontario. Visit our website www.zuidervaartagri.com to find a dealer near you.



Zuidervaart
AGRI-IMPORT LTD.

Box 306 Mitchell, ON, 5259 Hwy 8, N0K 1N0
Phone: 1-519 393 8290 - Fax: 1-519 393 8293

Mail: zuid-agri@quadro.net - Web: www.zuidervaartagri.com

Ton Zuidervaart: Cell 1-519-276-7445
Andrew Roosendaal: Cell 1-519-272-3409